

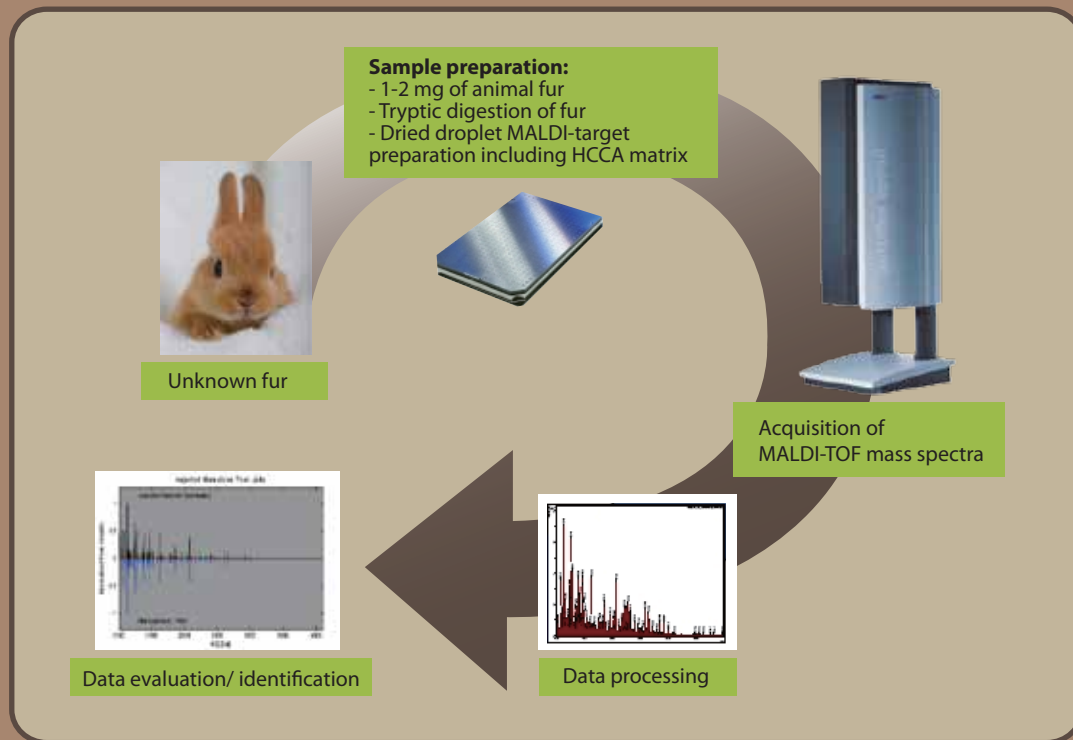
FITI
ANIMAL FIBER
TESTING LAB
SIAM TESTING SERVICES



"Committed To Quality"

fi*e*i FITI Testing &
Research Institute

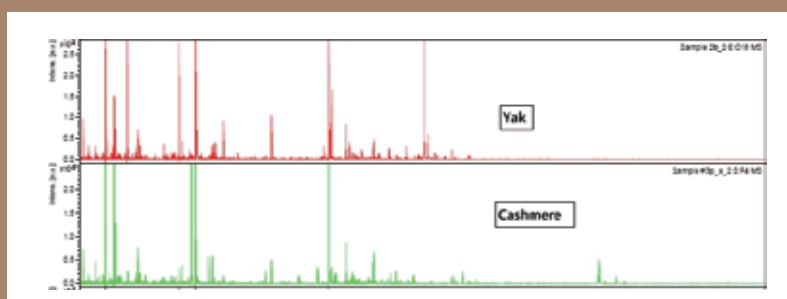
Animal Fiber Identification with MALDI-TOF mass spectroscopy



Workflow for SIAM test

Despite an epidemic of fake cashmere in the market, there aren't many labs who can identify cashmere correctly. This reality is related with the fact that the limit of a traditional method using a microscope has been abused by cashmere suppliers.

SIAM (Species Identification of Animals by MALDI-TOF Mass Spectrometry) method was developed to overcome the limit of microscopy requiring high degree of technician's skill and experience, and is based on the principle that the amino acid sequence of keratin differs from species to species. As keratin is stable to heat, not like DNA, this method can be usable even for products that have gone through bleaching, scouring, dyeing, or other similar finishes, allowing very rapid and accurate analysis.



MALDI-TOF mass spectra from Yak and Cashmere

FITI has been proved to be a world-class laboratory for animal fiber analysis by CCMI(Cashmere and Camel Hair Manufacturers Institute). With this international recognition of our technical expertise, we will continue to protect the interests of manufacturers, retailers, and consumers.

FITI has unparalleled technology and experience on animal fiber identification including cashmere, and is the only lab approved by CCMI (Cashmere and Camel Hair Manufacturers Institute) in Korea.

HSUS (The Humane Society of the United States) has annually surveyed fur products on the US market, subsequently petitioning FTC (Federal Trade Commission) to enjoin false advertisement and labeling of fur garments and to impose civil and criminal penalties. Similarly, CCMI is monitoring false labeling by market surveillance in regions inclusive of US, Europe, and Asia.

FITI Testing & Research Institute is a globally leading laboratory in SIAM method with an extensive database of protein fingerprints for various animal species which includes, but not limited to, cashmere, yak, raccoon, mink, muskrat, fox. Based on a wide range of experience and accurate testing capability, FITI is protecting the interests of consumers, manufacturers, and retailers.



Fiber Producing Animals

Family Bovidae

Sheep
(Ovis aries)

Cashmere
(Capra hircus laniger)
Angora Goat
(Mohair)

Yak
(Bos grunniens)

Family Camelidae

Camel
Alpaca
Llama
Vicuna
Guanaco

Family Leporidae

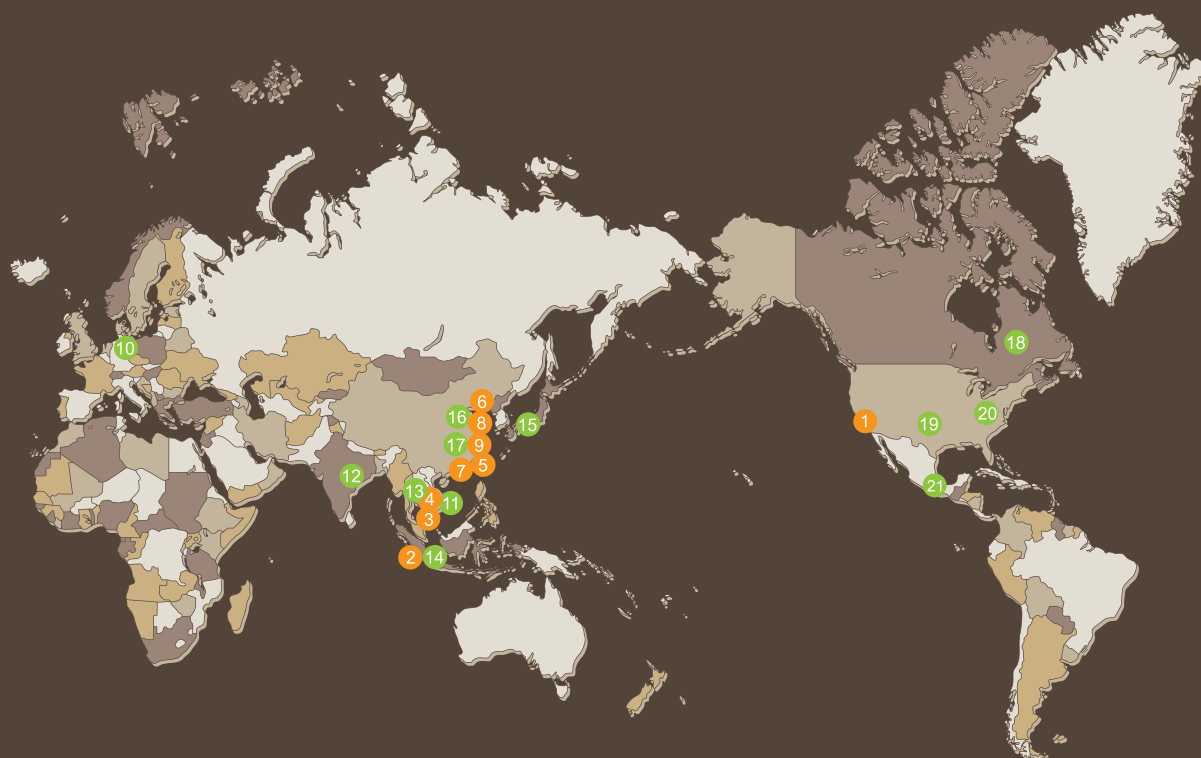
Angora Rabbit

Others

Shahtoosh
(Tibetan antelope)

Qiviut
(wool of the muskox)

FITI GLOBAL NETWORK



- | | | |
|---------------------------------|-----------------------------|-----------------|
| ① FITI U.S.A. LA Center | ⑧ FITI China Yantai Branch | ⑮ Japan BOKEN |
| ② FITI Indonesia Jakarta Branch | ⑨ FITI China Qingdao Center | ⑯ China CTA |
| ③ FITI Vietnam Hochiminh Branch | ⑩ Germany SKZ | ⑰ China CIQ |
| ④ FITI Vietnam Hanoi Center | ⑪ Vietnam TRI | ⑱ Canada CTT |
| ⑤ FITI China Shanghai Branch | ⑫ India BTRA | ⑲ U.S.A. TRI |
| ⑥ FITI China Dalian Center | ⑬ Thailand THTI | ⑳ U.S.A. GSI |
| ⑦ FITI China Guangzhou Center | ⑭ Indonesia SUCOFINDO | ㉑ Mexico INNTEX |

www.fiti.re.kr

Contact for Animal Fiber Identification

Felix Kim : +82-2-6931-8466, felixkim@fitiglobal.com